

Yamaha Tenere 700 Primary Drive Chain Guide

Part # 1263350012



Congratulations on purchasing the Primary Drive Chain guide for your Yamaha Tenere 700. This product was designed to meet and exceed your extreme adventure riding needs. *Please review and understand the instructions fully before proceeding. If you do not feel confident in performing the outlined steps or lack the appropriate tools, have a qualified mechanic perform the install.

INSTALLATION INSTRUCTIONS AND INFORMATION

Kit Contents

- Primary Drive Aluminum Plates (2)
- M6x16mm Black Button Head Bolts (3)
- Upper Chain Rub Block (1)
- Lower Chain Rub Block (1)
- Machined Alum. Mounting Bracket (1)
- M6x47mm Tapered Allen Bolts (2)
- M6 Flange Nuts (4)
- M6x49mm Hex Head Bolts (2)

Machine Fitment

Yamaha Tenere 700 '19-2020



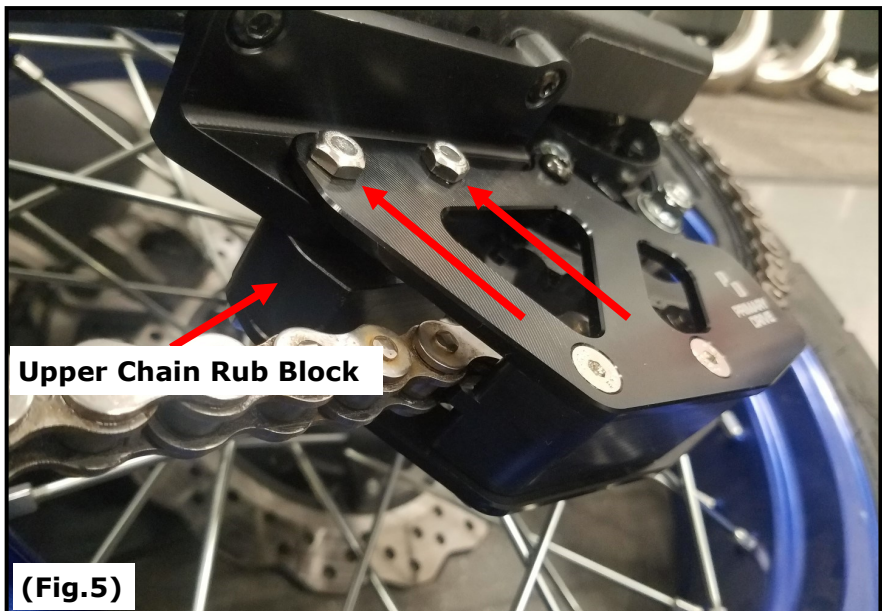
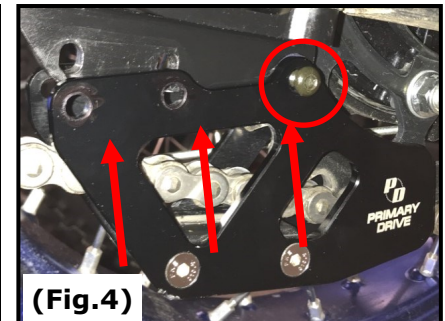
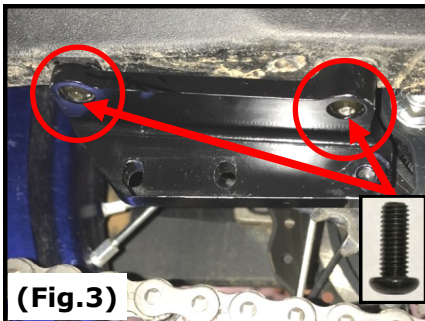
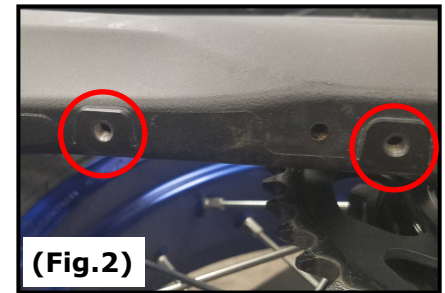
Machined Alum. Mounting Bracket



M6x16mm Black Button Head Bolts

Chain Guide Installation

1. Assemble the lower half of the Primary drive chain guide using the following hardware; (2) M6x47mm tapered allen bolts, (2) M6 Flange nuts, outer Primary drive aluminum plate w/logo, inner primary drive aluminum plate and the lower chain rub block with the center groove. Assemble as shown in **(Fig.1)**. Set the partly assembled chain guide aside for now.
2. On the underside of the swing-arm, locate the mounting location for the aluminum mounting bracket, and chain guide. Find two factory threaded bolt locations circled in **(Fig.2)**.
3. Locate the provided machined aluminum mounting bracket, and (2) M6x16mm black button head bolts. Using the black button head bolts install the aluminum mounting bracket to the threaded holes on the bottom of the swing-arm as show in **(Fig.3)**.
4. Next, slide the previously assembled lower half of the Primary Drive Chain Guide from step 1 into place, see **(Fig.4)**. Locate (1) provided M6x16mm black button head bolt and loosely install the bolt to the aluminum mounting bracket, location circled in **(Fig.4)**. This bolt will hold the assembly in place for the next step.
5. Locate the provided upper chain rub block and remaining (2) M6x49mm hex head bolts, and (2) 6M nuts. Install the upper chain rub block as shown in **(Fig.5)**. Install the (2) M6x49mm hex head bolts through the Primary Drive Chain guide, through the aluminum mounting bracket, and through the upper chain rub block. Install the (2)M6 nuts on the back and tighten all loose hardware. Enjoy the use of your new Primary Drive Chain Guide!



Upper Chain Rub Block